



Modular Aluminium Residential Solar Carport

Vela Series



TÜV Tested



Eurocode Design Compliant



Built-In Waterproof Design



Adjustable Height & Lightweight

A Smart Upgrade for Lasting Savings

Why settle for a traditional carport? The Vela Solar Carport does more than just protect your vehicle. It also generates clean electricity to power your home and charge your electric vehicle.

With our Vela Series Solar Carport, you can turn a utility space into a smart investment that delivers long-term savings and peace of mind.

Key Features

Structural Waterproof Panels



Features GoodWe Polaris BIPV panels with an integrated, glue-free waterproofing system, ensuring a sleek, seamless, and durable finish.

Innovative Modular Design



As a complete modular system, the Vela carport offers outstanding versatility. The adjustable clearance height can easily accommodate different vehicle sizes.

Effortless Installation



Designed for simplicity. The lightweight construction enables a straightforward installation without the need for heavy machinery.

Cost-Savings



Maximise your property's potential. Shelter your vehicle from the elements while generating clean energy to reduce your electricity bills and charge your EV for free.

Ready for Accessories



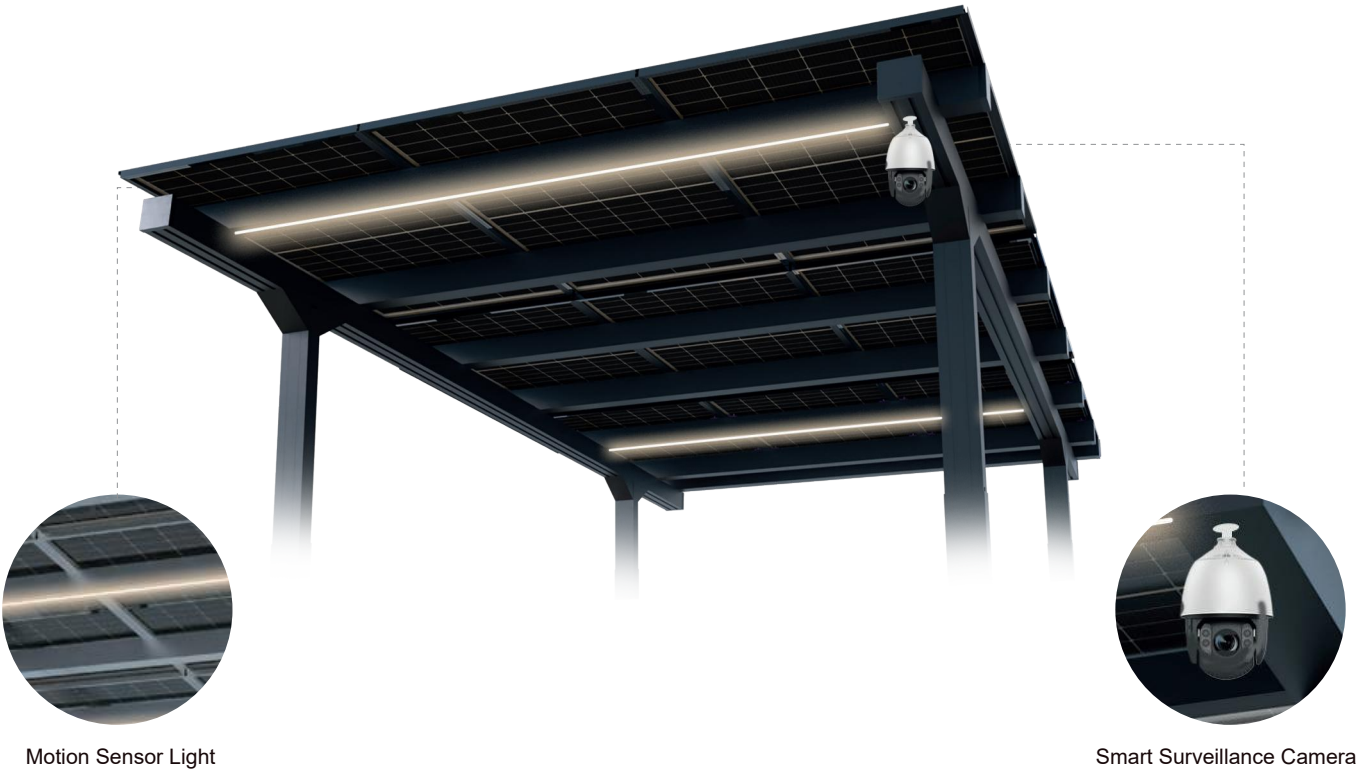
The system is designed to support a variety of optional accessories, such as security cameras and motion-sensor lighting.

All-in-One Solution



The complete carport system is delivered in a single, convenient package, simplifying logistics from procurement to installation.

Structure & Accessories



Motion Sensor Light

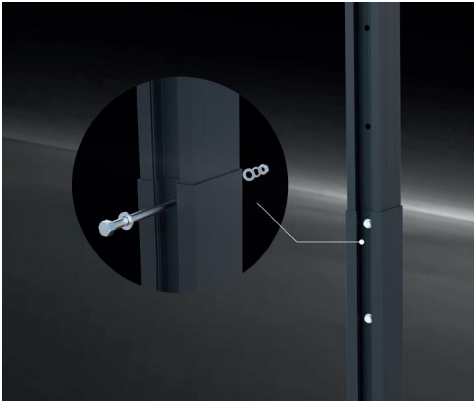
Smart Surveillance Camera



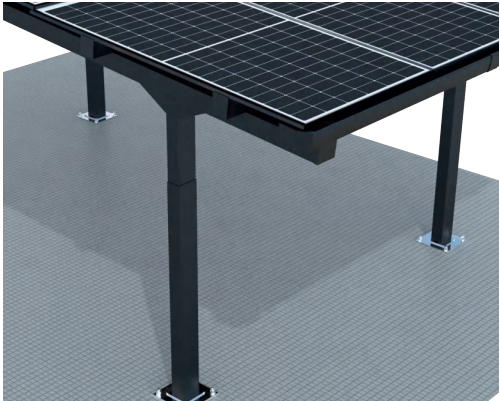
Structurally Waterproof



Clamp Mounting



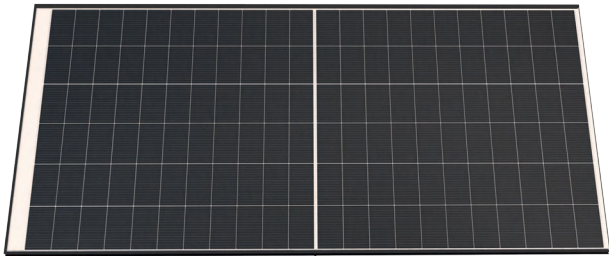
Adjustable Height








Gutter (excluding downpipe)

Waterproof BIPV Panels

GoodWe Polaris Series for Solar Carport

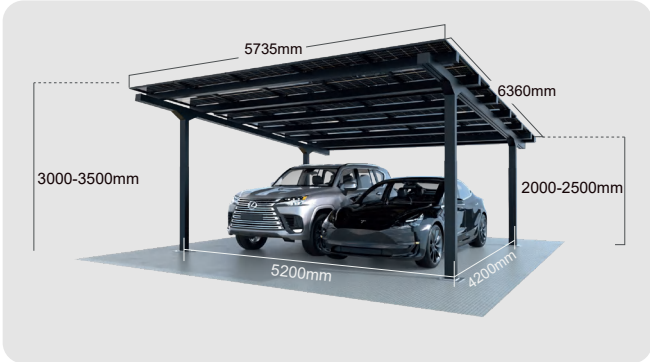
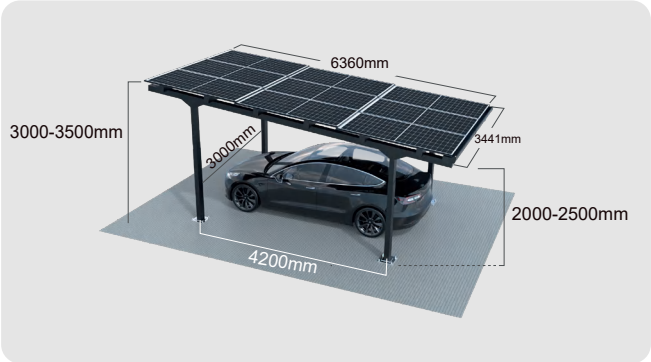


-  Excellent Self-cleaning Ability
-  Structural Waterproofing
-  Rated Class 1 for fire reaction according to UNI 9177.
-  Double-glass Design
-  Convenient Installation

Panel Data	BMT-P2/132A	BMT-P2/108A
Size*	2142*1160*29.6mm	1771±2*1160±2*29.6±1mm
Weight	30+0.5kg	24.5+0.5kg
Cable	4 mm ²	4 mm ²
Cell Type	N-Type TOPCon Half Cells (132pcs)	N-Type TOPCon Half Cells(108pcs)

Electrical Data (STC)	STC:AM=1.5, irradiance 1000W / m ² , component temperature 25° C	
Power (W)	535W	435W
Efficiency(%)	21.5%	21.2%
Power/m ² (W/m ²)	215W/m ²	212W/m ²
Voltage at Max Power (Vmpp)	41.47V	33.72V
Voltage at Open Circuit (Voc)	48.21V	39.20V
Current at Max Power (Impp)	12.90A	12.90A
Current at Short Circuit (Isc)	13.60A	13.60A

Vela Carport Specifications



	Single	Double
Power Output	4.815 kW	8.025 kW
Carport Structure Length	6360 mm	6360 mm
Carport Structure Width	3441 mm	5735 mm
Carport Peak Height	3000-3500 mm	3000-3500 mm
Carport Clearance Height	2000-2500 mm	2000-2500 mm
Solar Panels	Polaris 535W x 9PCS	Polaris 535W x 15PCS
Base	Galvanized carbon steel	
Main Structure	6005-T5 aluminum alloy	
Connectors	6005-T5 aluminum alloy	

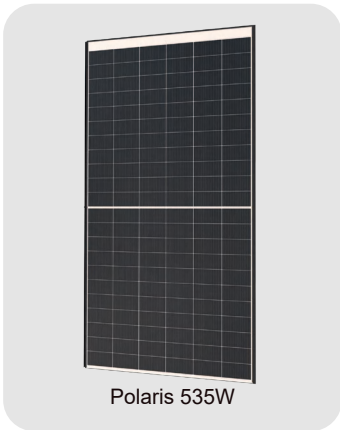
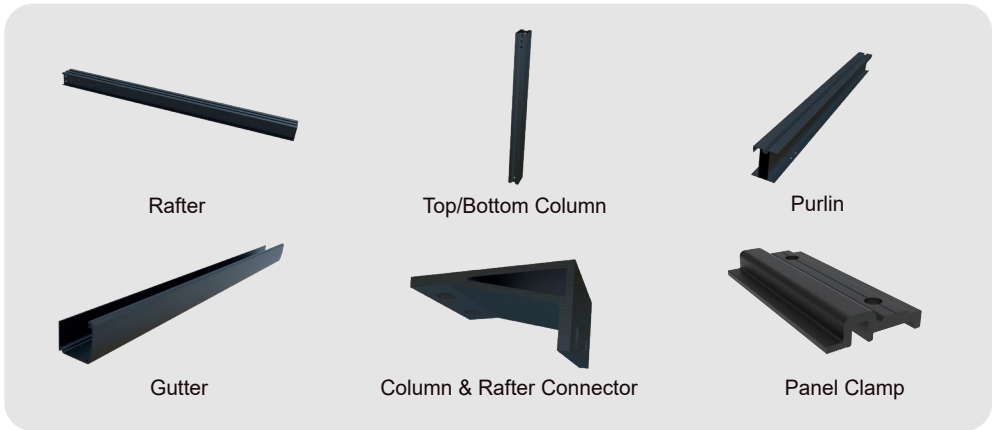
Single Solar Carport Solution



Double Solar Carport Solution



All-In-One Package




GOODWE PV BUILDING MATERIALS

Solarise Every Building



 LinkedIn



 Youtube



 Facebook



 Instagram



 Rednote



 GoodWe



GOODWE EUROPE GMBH



Kistlerhofstrasse 170, 81379 München, Germany



service.de@goodwe.com



carport.pvbm@goodwe.com



+49 89 7807 289-50



en.pvbm.com